

MAIN FLOOR PLAN

CAB OVER PLAN



THE HEMLOCK

Cab-Over

Double Car Attached Garage

Square Feet
1,272

Bedrooms
3

Bathrooms
2

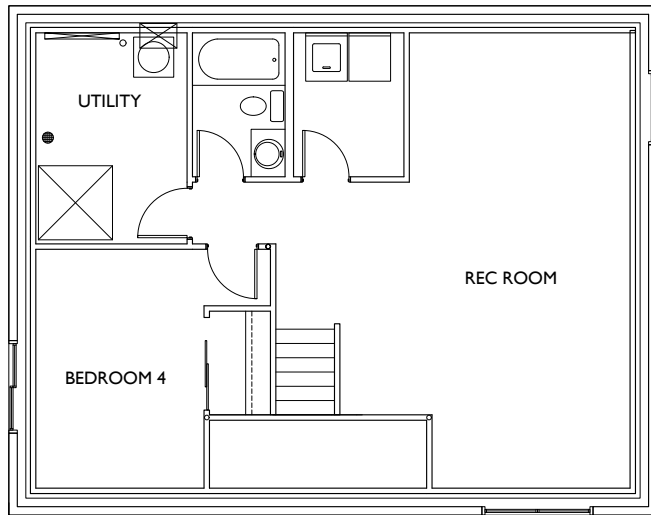
204-728-2235
www.jandghomes.ca

RE/MAX
VALLEYVIEW REALTY

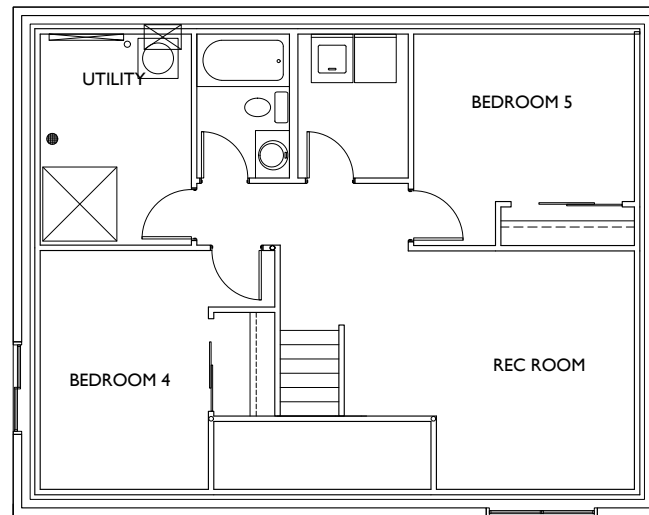


Plans may not be exactly as shown. Builder reserves right to make changes. The square footage, measurements, renderings and layout may vary based on the elevation and/or lot. Plans are subject to change without notice. Pricing subject to change, final pricing to be provided by J&G Homes office at time of request.

PROPOSED BASEMENT PLANS



ONE BEDROOM



TWO BEDROOMS



THE
HEMLOCK
Cab-Over

Double Car Attached Garage

Square Feet
1,272

Bedrooms
3

Bathrooms
2

204-728-2235
www.jandghomes.ca

RE/MAX
VALLEYVIEW REALTY



Plans may not be exactly as shown. Builder reserves right to make changes. The square footage, measurements, renderings and layout may vary based on the elevation and/or lot. Plans are subject to change without notice. Pricing subject to change, final pricing to be provided by J&G Homes office at time of request.