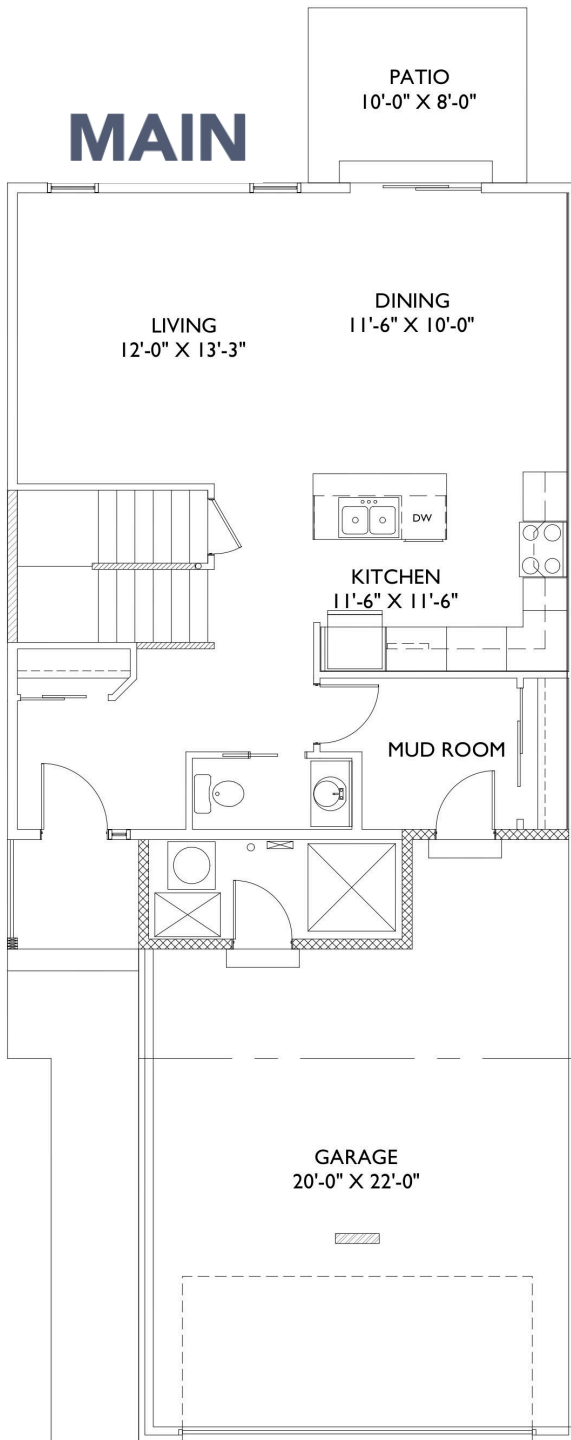


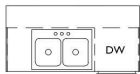
MAIN



PATIO
10'-0" X 8'-0"

LIVING
12'-0" X 13'-3"

DINING
11'-6" X 10'-0"

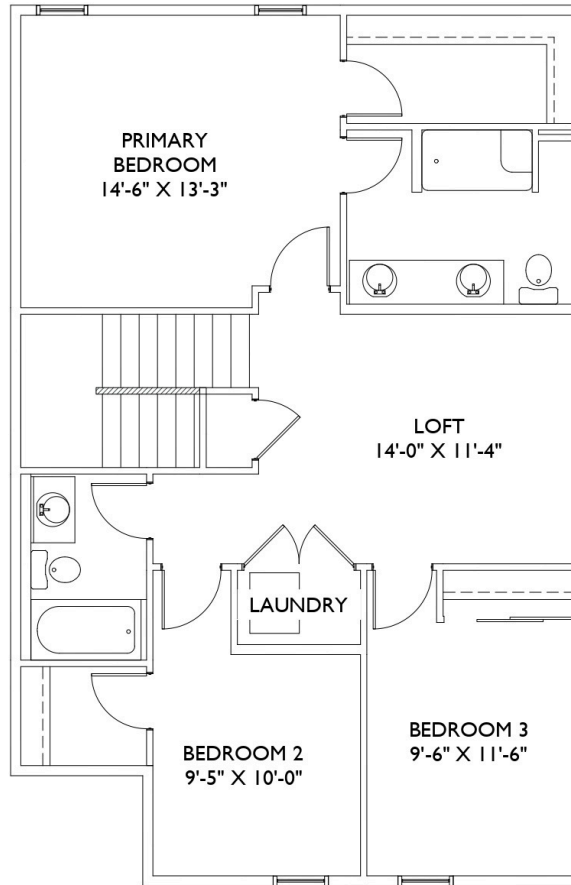


KITCHEN
11'-6" X 11'-6"

MUD ROOM

GARAGE
20'-0" X 22'-0"

SECOND



PRIMARY
BEDROOM
14'-6" X 13'-3"

LOFT
14'-0" X 11'-4"

LAUNDRY

BEDROOM 2
9'-5" X 10'-0"

BEDROOM 3
9'-6" X 11'-6"



THE CARIBOU 24 JUNEGRASS WAY

2-Storey Condominium

Attached Double Car Garage

Price	Square Feet
\$458,900	1,835

Bedrooms	Bathrooms
3	2.5

204-728-2235
www.jandghomes.ca

RE/MAX
VALLEYVIEW REALTY



J&GHomes
customized lifestyles

Plans may not be exactly as shown. Builder reserves right to make changes. The square footage, measurements, renderings and layout may vary based on the elevation and/or lot. Plans are subject to change without notice. Pricing subject to change, final pricing to be provided by J&G Homes office at time of request.